

# YOUR horizon

Horizon Community Training Newsletter

Issue 1

## Horizon Community Training is OPEN

Horizon Community Training (HORIZON) is a brand-new alternative Training Centre for young vulnerable people facing learning, behavioural or emotional challenges.

HORIZON is a welcoming, safe and supportive space for those who are, or at risk of becoming, NEET (Not in Employment, Education or Training).

At HORIZON learners will have access to an education and be able to develop fundamental life skills. The training offered will be tailored to individual needs and interests in order to maximise engagement and learning.

Embedded within all our courses are maths, English, community projects and real-life work experiences.

There is a long list of people to thank for their support and they are acknowledged on the HORIZON website as "Friends or Horizon".

HORIZON will become a pivotal place for young people by becoming a focus and a source of support and encouragement for young adults in the community. HORIZON is now ready to receive students and will be able to offer a wide range of training opportunities from its planned launch date of September 2020. Horizon is currently taking applications to reflect the need and support for HORIZON in the community.

Anyone who wants to become a part of this new endeavour can contact Mark and his team on 01493 717767 or visit the HORIZON website at [www.horizoncommunitytraining.co.uk](http://www.horizoncommunitytraining.co.uk)

**horizon**  
COMMUNITY TRAINING

Launching Sept 2020  
Open for enrolments Now!

**Something About Us**  
We are a community based training provider committed to giving a fresh opportunity to learners who have not yet achieved their full potential in the education system.

**We Provide**

- ✓ safe, supportive and engaging environment for learning
- ✓ courses designed to meet the needs of individual learners
- ✓ learning that is meaningful and useful in the wider community
- ✓ opportunities to be engaged in exciting projects that take learners skills further
- ✓ the encouragement to learners to take full responsibility for their lives
- ✓ the framework to develop qualities of leadership and co-operation

11 Hall Quay,  
Great Yarmouth,  
Norfolk, NR30 1HP  
[www.horizoncommunitytraining.co.uk](http://www.horizoncommunitytraining.co.uk)

Scan me!

*We aim to make a difference that lasts a lifetime*

### 11 Hall Quay, Great Yarmouth



Situated at 11 Hall Quay, Great Yarmouth, the property has been transformed from a desolate vacant building into what will become a vibrant Community Hub serving the surrounding towns and villages. Its position on the Quayside means it is easily accessible for transport and conveniently located to the amenities of the Town Centre.

#### Support Local

*"When we need refuelling we go to Big Mama's on the Market. She offers a wide range of drinks, sandwiches and cakes at great prices with wonderful service"*



#### Horizon Heroes



This newsletter's hero is Repps Garage. They look after the "Horizon Task Force Mobile" and offer a wide range of services to keep us (and you) on the road. With friendly, reliable, expert motor mechanics, this family business run by Jason Hart has been in the community for over 30 years.

## The Director

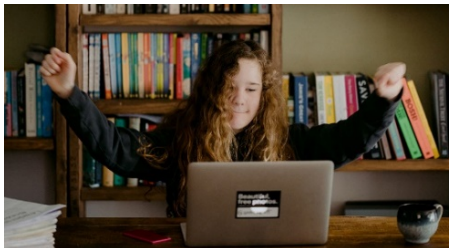
Mark Shanahan is the Director of HORIZON. For the last 14 years he worked at East Coast College (formally Great Yarmouth College), where he achieved considerable success. He has built a formidable reputation as someone who makes a difference to the lives of young people who are most in need of support in order to develop and find their own way in life. This includes those for whom mainstream education has not been successful or those who require tailored guidance. The core of HORIZON is based on Mark's philosophy and strong personal commitment to helping others. It has been Mark's desire to develop a centre that offers invaluable help and support to those who need it most.



Director and Tutor  
Mark Shanahan

# Horizone

*The Learners article section where learners can submit a story or report about anything, such as something they have done or achieved while attending Horizon, a local story or history or facts that people may be interested in learning about. A reward of 30 to 50 Horizon Dollars is awarded to the learner whose article makes the Horizone section of the newsletter.*



## HART Clubs

Horizon Clubs are open to members of the public and are designed around building up social skills, emotional confidence and improving physical and mental well-being while learning new skills. They may cover specific subjects and have guest speakers either relating to the topic or physical and mental wellbeing while taking part in an activity. Six to 12 weeks timetable (depending on the club) will be published to give members an idea of subjects and well-being topics that are being covered.

These clubs are designed to be drop-ins, and you can attend when you can. Each is charged at around £3 a session. (The clubs and cost are subject to change)

- Hobbies
- And
- Relaxation
- Training

# OUR COURSES

## Fulltime Courses

### ENGAGE

**Age group: 16-24**

Designed for those who have been withdrawn from or have been out of mainstream education on account of behavioural difficulty.

### INCLUDE

**Age group: 16-24**

Designed for those who have an identified learning or social difficulty (in receipt on an EHCP) and require more time in a smaller setting.

**Part-time** (usually 1 day a week)

### IGNITE

**Age group: pre-16**

Designed to motivate and encourage learners who have not yet been detached from education but are at risk of losing contact or being removed from mainstream and currently home schooled.

### EVOLVE

Coming soon!

## VOUCHER

# 50p off

**ANY**

**Horizon reusable cup or bottle**



**Present this voucher for a 50p discount on either a water bottle or hot cup**